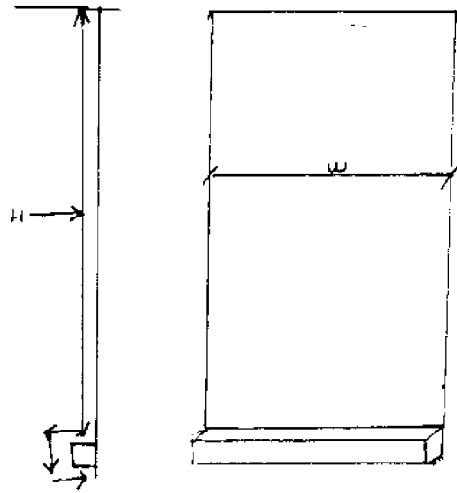
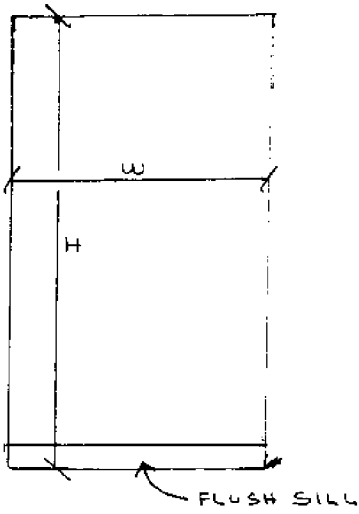
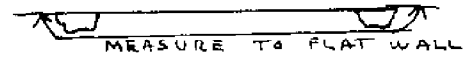


- \* DEFAULT IS TOP/BOTTOM MTD. WHENEVER POSSIBLE
- \* MAXIMUM OPENING 108" X 250"

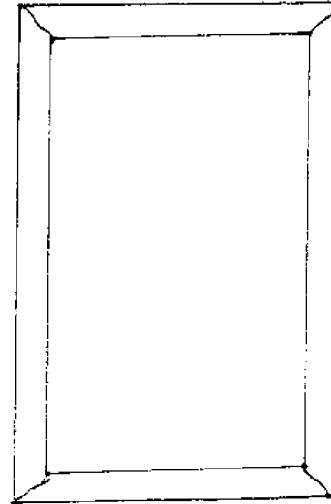
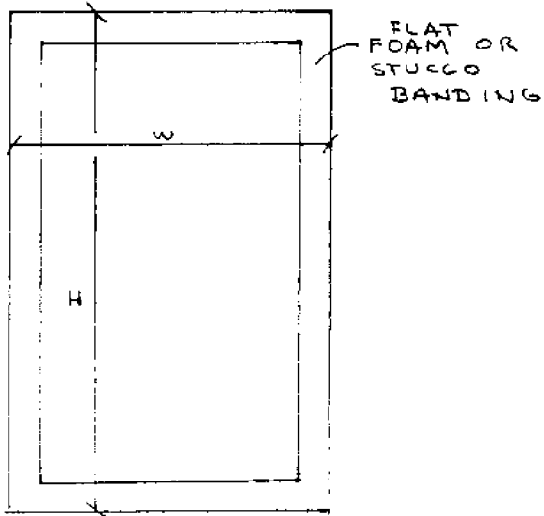
MEASURE OPENING

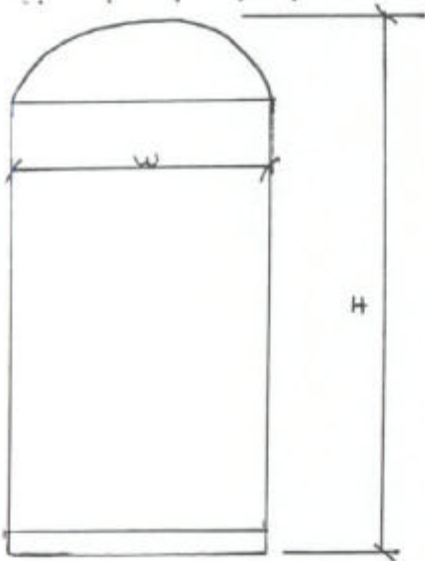


STD WINDOW w/  
SILL PETRUDING

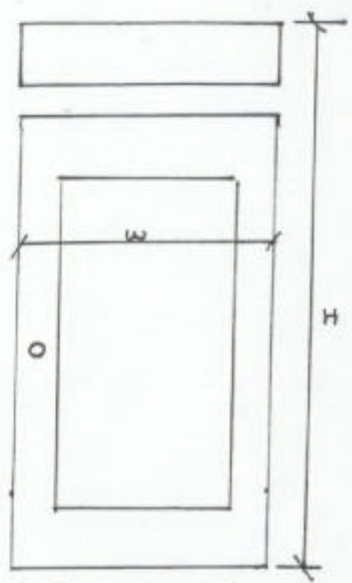


RAISED BANDING



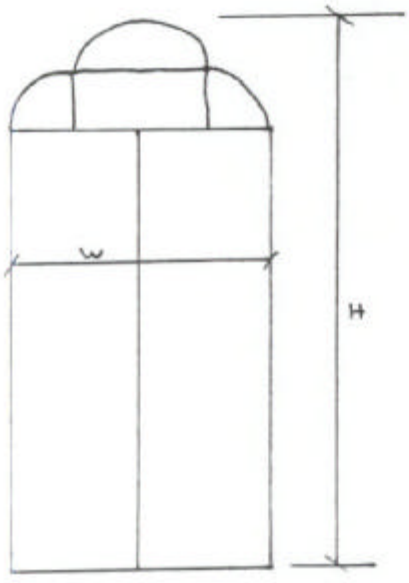


IF YOU DO NOT HAVE 3"  
 OF BLANK WALL BETWEEN TOP  
 OF WINDOW & SOFFIT THEN MOUNTING  
 WILL BE ON SIDES.



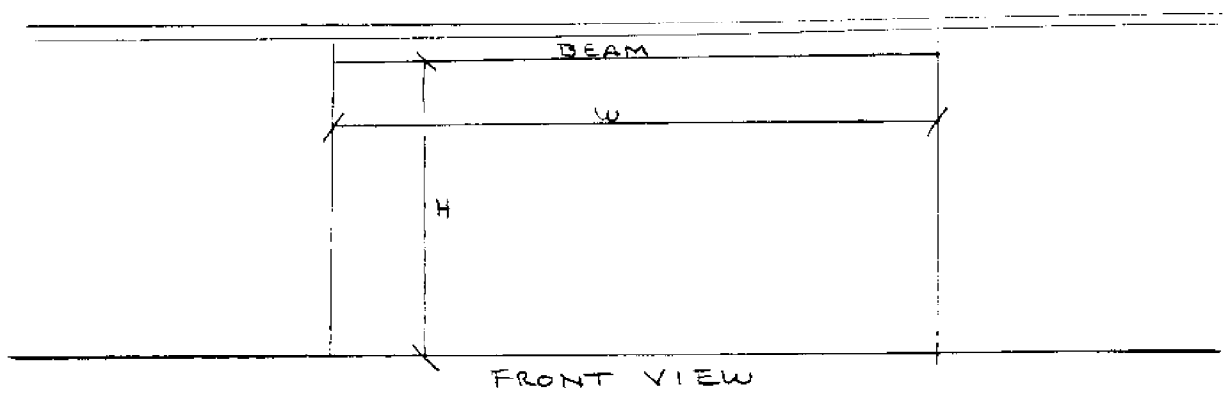
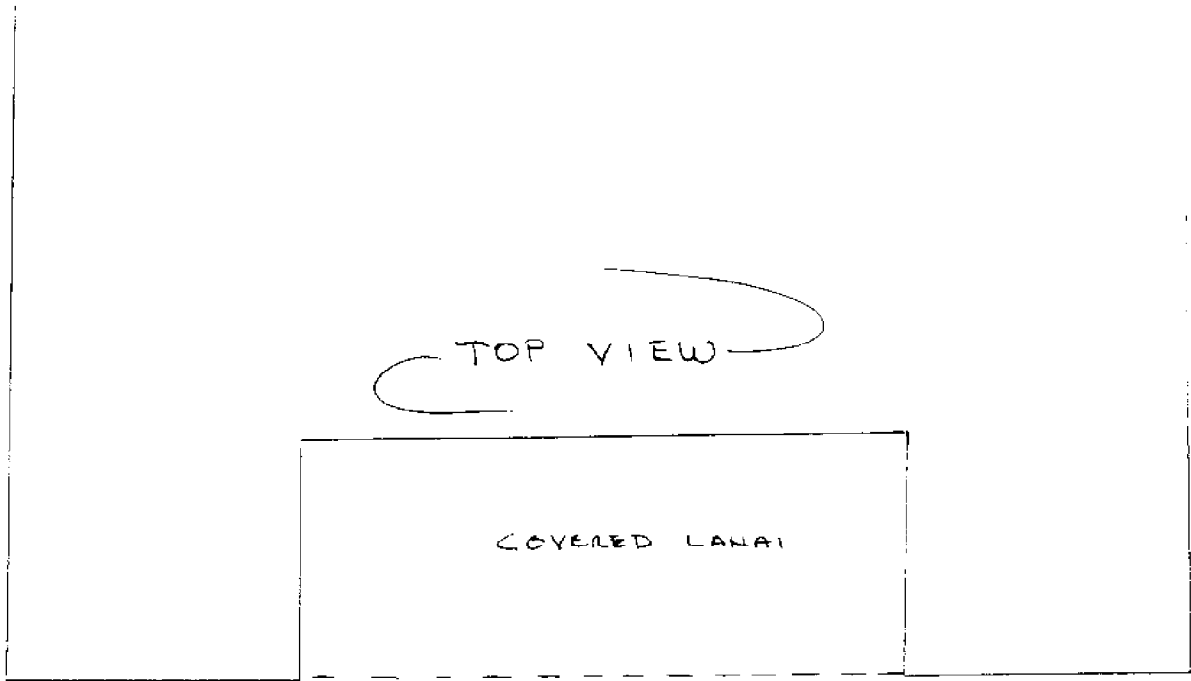
FRONT DOOR  
 w/TRANSOM

- WE WILL ORDER (1) PIECE OF FABRIC
- IF THERE IS A 3" STEP, WE WILL MTD, TOP/BOTTOM



- SQUARE OFF TOP





\* MAY NEED TO USE "F" CHANNEL  
MOUNTED TO DECK USING SAME  
FASTENERS